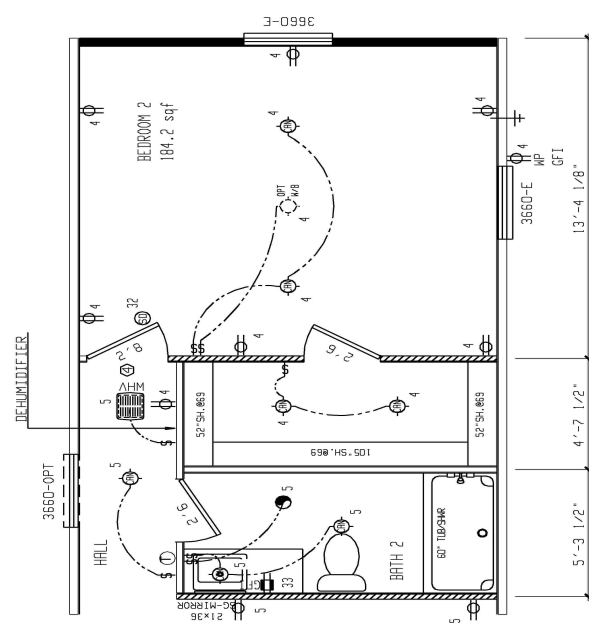
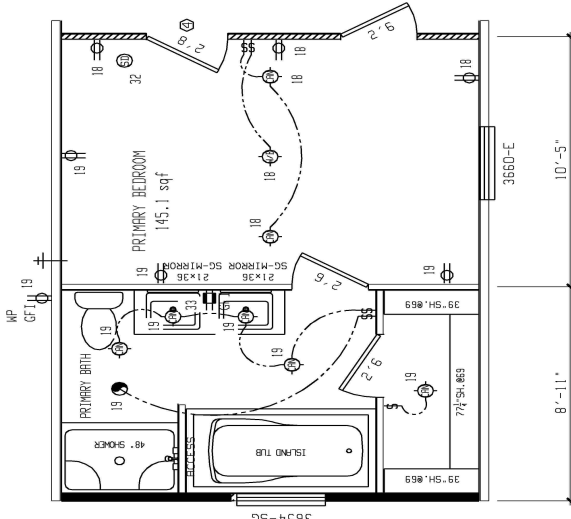


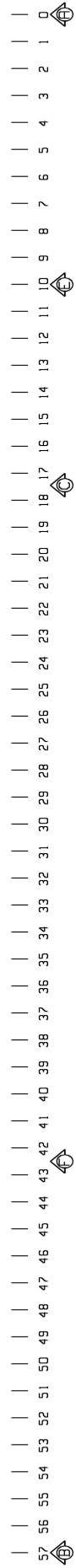
2 BEDROOM OPTION



GLAMOUR BATH OPTION



APPROVED BY
NIA INC.
 FEDERAL MANUFACTURED HOMES
 CONSTRUCTION AND SAFETY STANDARDS



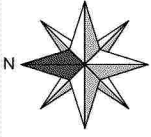
957-4204.0.1

REV.	DATE	DESCRIPTION
1		
2		
3		
4		
5		
6		
7		
8		
9		
10		
11		
12		
13		
14		
15		
16		
17		
18		
19		
20		
21		
22		
23		
24		
25		
26		
27		
28		
29		
30		
31		
32		
33		
34		
35		
36		
37		
38		
39		
40		
41		
42		
43		
44		
45		
46		
47		
48		
49		
50		
51		
52		
53		
54		
55		
56		
57		

REVISIONS	BY	DATE	GENERAL NOTES
			CEILING HEIGHT = 96.00 REFER TO DRAWING PAGE MP-2.0 FOR AREA LIGHT & VENT REFER TO DRAWING PAGE EL-1.2 FOR ELEC. SYMBOL & BRANCH CIRCUIT NUMBER

BRAND	CLAYTON	SERIES	BM16	DRAWING TITLE	MASTER PLAN #2
MODEL NO.	957	DESCRIPTION	16X76 3BR-2BA	MODEL NAME	4204
DRAWN BY	GDB	DATE PRINTED	09/14/2023	PLANT	1140
SHEET NO.	1-2	INDICATES REQUIRED NUMBER OF STUDS IN COLUMN		DATE	05/17/2023
		THE * SPECIFIES THAT THERE CAN BE NO HOLES IN STUDS IN COLUMNS		ORIG. DATE	09/14/2023

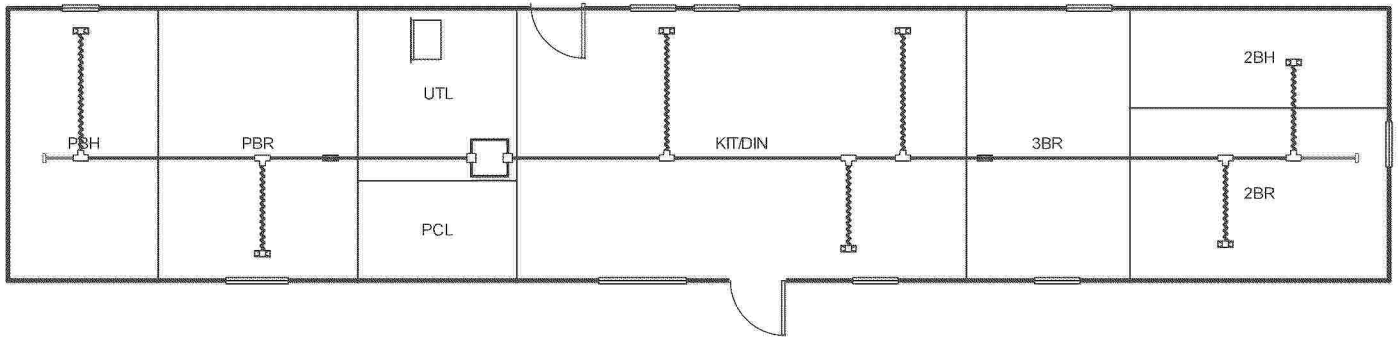
RETURN AIR REQUIREMENTS	INDICATES REQUIRED NUMBER OF STUDS IN COLUMN
1) 20"x16" GRILL REQUIRED	
2) 4"x10" GRILL w/ 2 1/2" DOOR UNDERCUT	
3) DOOR(S) MUST BE UNDERCUT 2 1/2" MIN.	
4) 4"x24" OR 6"x14" GRILL REQUIRED	



APPROVED BY



Level 1



957-4204.4.1

Job #: 4204(I&P)
Performed by CLAYTON ROCKWELL for:
4204(I&P)
ROCKWELL, NC

Scale: 1 : 127
Page 1
Right-Suite® Universal 2023
23.0.03 RSU61395
2023-Sep-12 14:41:05
...yton Homes\Desktop\4204(I&P).rup

Project Information

For: 4204(I&P), CLAYTON 957
ROCKWELL, NC

Notes: DUCT COOLING CAPACITY = 26,000 BTU/HR

APPROVED BY



Design Information

Weather: Fort Bragg/Simmons, NC, US

Winter Design Conditions

Outside db 26 °F
Inside db 70 °F
Design TD 44 °F

Summer Design Conditions

Outside db 95 °F
Inside db 75 °F
Design TD 20 °F
Daily range M
Relative humidity 50 %
Moisture difference 41 gr/lb

Heating Summary

Structure 13676 Btuh
Ducts 0 Btuh
Central vent (60 cfm) **2892** Btuh
Outside air
Humidification 0 Btuh
Piping 0 Btuh
Equipment load 16568 Btuh

Sensible Cooling Equipment Load Sizing

Structure 11697 Btuh
Ducts 0 Btuh
Central vent (60 cfm) **1289** Btuh
Outside air
Blower 0 Btuh
Use manufacturer's data n
Rate/swing multiplier 1.00
Equipment sensible load 12947 Btuh

Infiltration

Method Simplified
Construction quality Average
Fireplaces 0

	Heating	Cooling
Area (ft ²)	1140	1140
Volume (ft ³)	9120	9120
Air changes/hour	0.45	0.23
Equiv. AVF (cfm)	74	41

Latent Cooling Equipment Load Sizing

Structure 1934 Btuh
Ducts 0 Btuh
Central vent (60 cfm) **1644** Btuh
Outside air
Equipment latent load 3578 Btuh
Equipment Total Load (Sen+Lat) 16524 Btuh
Req. total capacity at 0.70 SHR 1.5 ton

Heating Equipment Summary

Make Smart Comfort
Trade 15 SEER2 R SERIES R410A HP
Model R4H5S24*K*AAA*
AHRI ref 0
Efficiency 7.5 HSPF2
Heating input
Heating output 22800 Btuh @ 47°F
Temperature rise 27 °F
Actual air flow 780 cfm
Air flow factor 0.057 cfm/Btuh
Static pressure 0.30 in H2O
Space thermostat
Capacity balance point = 20 °F
Backup: Smart Comfort
Input = 10 kW, Output = 34121 Btuh, 100 AFUE

Cooling Equipment Summary

Make Smart Comfort
Trade 15 SEER2 R SERIES R410A HP
Cond R4H5S24*K*AAA*
Coil FEVA0024**+NAVA43601CK
AHRI ref 0
Efficiency 12.0 EER2, 15.2 SEER2
Sensible cooling 16380 Btuh
Latent cooling 7020 Btuh
Total cooling 23400 Btuh
Actual air flow 780 cfm
Air flow factor 0.067 cfm/Btuh
Static pressure 0.30 in H2O
Load sensible heat ratio 0.78

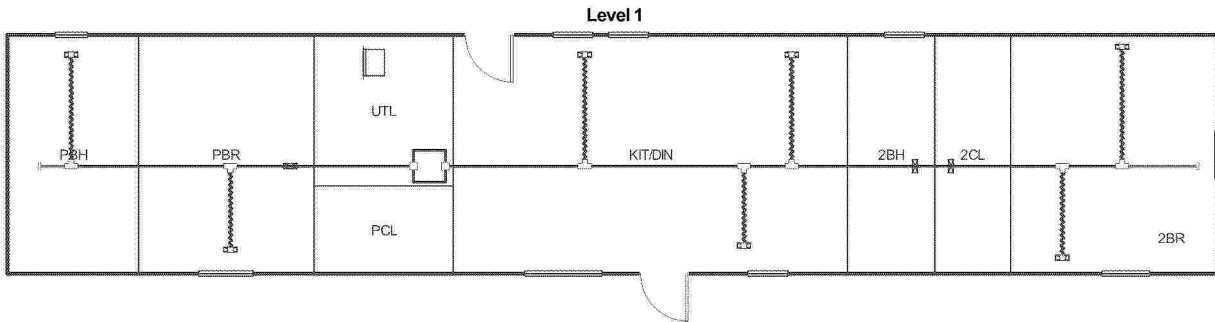
957-4204.4.2

Bold/italic values have been manually overridden

Calculations approved by ACCA to meet all requirements of Manual J 8th Ed.



APPROVED BY
NIA INC. 9/15/2023
FEDERAL MANUFACTURED HOME
CONSTRUCTION AND SAFETY STANDARDS



957-4204.4.3

Job #: 4204_2BR(I&P)
Performed by **CLAYTON ROCKWELL** for:
4204_2BR(I&P)
ROCKWELL, NC

Scale: 1 : 136
Page 1
Right-Suite® Universal 2023
23.0.04 RSU28036
2023-Sep-13 09:52:30
... Homes\Desktop\4204_2BR(I&P).rup



Project Summary

Entire House

Job: 4204_2BR(I&P)
 Date: Sept 13, 2023
 By: CLAYTON ROCKWELL

Project Information

For: 4204_2BR(I&P), CLAYTON 957
 ROCKWELL, NC

Notes: DUCT COOLING CAPACITY = 26,000 BTU/HR

APPROVED BY



Design Information

Weather: Fort Bragg/Simmons, NC, US

Winter Design Conditions

Outside db 26 °F
 Inside db 4 °F
 Design TD 0 °F

Summer Design Conditions

Outside db 95 °F
 Inside db 75 °F
 Design TD 20 °F
 Daily range M
 Relative humidity 50 %
 Moisture difference 41 gr/lb

Heating Summary

Structure 0 Btuh
 Ducts 0 Btuh
Central vent (45 cfm) 0 Btuh
Outside air
 Humidification 0 Btuh
 Piping 0 Btuh
 Equipment load 0 Btuh

Sensible Cooling Equipment Load Sizing

Structure 12210 Btuh
 Ducts 0 Btuh
Central vent (45 cfm) 967 Btuh
Outside air
 Blower 0 Btuh
 Use manufacturer's data n
 Rate/swing multiplier 1.00
 Equipment sensible load 13137 Btuh

Infiltration

Method Simplified
 Construction quality Average
 Fireplaces 0

Latent Cooling Equipment Load Sizing

Structure 2221 Btuh
 Ducts 0 Btuh
Central vent (45 cfm) 1233 Btuh
Outside air
 Equipment latent load 3454 Btuh
Equipment Total Load (Sen+Lat) 16591 Btuh
 Req. total capacity at 0.70 SHR 1.6 ton

	Heating	Cooling
Area (ft ²)	1140	1140
Volume (ft ³)	9120	9120
Air changes/hour	0.45	0.23
Equiv. AVF (cfm)	82	52

Heating Equipment Summary

Make Smart Comfort
 Trade
 Model
 AHRI ref

Efficiency 100 EFF
 Heating input 10.0 kW
 Heating output 34121 Btuh
 Temperature rise 40 °F
 Actual air flow 780 cfm
 Air flow factor 0 cfm/Btuh
 Static pressure 0.30 in H2O
 Space thermostat

Cooling Equipment Summary

Make Smart Comfort
 Trade 15 SEER2 AC
 Cond R4A5S24*K*WAA*
 Coil FEVA0024**+NAVA43601CK
 AHRI ref 0
 Efficiency 13.0 EER2, 15.5 SEER2

Sensible cooling 16380 Btuh
 Latent cooling 7020 Btuh
 Total cooling 23400 Btuh
 Actual air flow 780 cfm
 Air flow factor 0.064 cfm/Btuh
 Static pressure 0.30 in H2O
 Load sensible heat ratio 0.79

957-4204.4.4

Bold/italic values have been manually overridden

Calculations approved by ACCA to meet all requirements of Manual J 8th Ed.



wrightsoft

Right-Suite® Universal 2023 23.0.04 RSJ28036

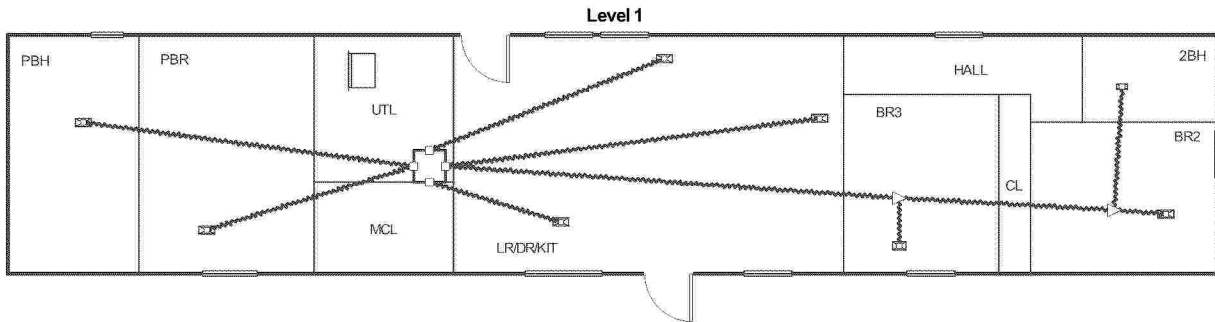
2023-Sep-13 09:52:23

...Drive - Clayton Homes\Desktop\4204_2BR(I&P).rup Calc = MJ8 Front Door faces: N

Page 1



APPROVED BY
NIA 9/15/2023
INC.
FEDERAL MANUFACTURED HOME
CONSTRUCTION AND SAFETY STANDARDS



957-4204.4.5

Job #: 4204(OHVD)
Performed by **CLAYTON ROCKWELL** for:
4204(OHVD)
ROCKWELL, NC

Scale: 1 : 136
Page 1
Right-Suite® Universal 2023
23.0.04 RSU28036
2023-Sep-13 07:23:37
R:\WRITESOFT\MODELS\4204(OH...



Project Summary

Entire House

Job: 4204(OHVD)
 Date: Sep 12, 2023
 By: CLAYTON ROCKWELL

Project Information

For: 4204(OHVD), CLAYTON 957
 ROCKWELL, NC

Notes: DUCT COOLING CAPACITY = 26,000 BTU/HR

APPROVED BY

 9/15/2023
 FEDERAL MANUFACTURED HOME
 CONSTRUCTION AND SAFETY STANDARDS

Design Information

Weather: Columbia Metro, SC, US

Winter Design Conditions

Outside db	27 °F
Inside db	70 °F
Design TD	43 °F

Summer Design Conditions

Outside db	95 °F
Inside db	75 °F
Design TD	20 °F
Daily range	M
Relative humidity	50 %
Moisture difference	34 gr/lb

Heating Summary

Structure	12477 Btuh
Ducts	2942 Btuh
Central vent (60 cfm)	2815 Btuh
Outside air	
Humidification	0 Btuh
Piping	0 Btuh
Equipment load	18235 Btuh

Sensible Cooling Equipment Load Sizing

Structure	11824 Btuh
Ducts	2666 Btuh
Central vent (60 cfm)	1296 Btuh
Outside air	
Blower	0 Btuh
Use manufacturer's data	n
Rate/swing multiplier	1.00
Equipment sensible load	15754 Btuh

Infiltration

Method	Simplified
Construction quality	Average
Fireplaces	0

	Heating	Cooling
Area (ft²)	1140	1140
Volume (ft³)	9120	9120
Air changes/hour	0.45	0.23
Equiv. AVF (cfm)	74	41

Latent Cooling Equipment Load Sizing

Structure	1761 Btuh
Ducts	523 Btuh
Central vent (60 cfm)	1392 Btuh
Outside air	
Equipment latent load	3676 Btuh
Equipment Total Load (Sen+Lat)	19431 Btuh
Req. total capacity at 0.70 SHR	1.9 ton

Heating Equipment Summary

Make	Smart Comfort
Trade	
Model	
AHRI ref	
Efficiency	100 EFF
Heating input	10.0 kW
Heating output	34121 Btuh
Temperature rise	40 °F
Actual air flow	780 cfm
Air flow factor	0.051 cfm/Btuh
Static pressure	0.30 in H2O
Space thermostat	

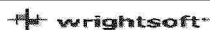
Cooling Equipment Summary

Make	Smart Comfort
Trade	15 SEER2 AC
Cond	R4A5S24*K*WAA*
Coil	FEVA0024**+NAVA43601CK
AHRI ref	0
Efficiency	13.0 EER2, 15.5 SEER2
Sensible cooling	16380 Btuh
Latent cooling	7020 Btuh
Total cooling	23400 Btuh
Actual air flow	780 cfm
Air flow factor	0.054 cfm/Btuh
Static pressure	0.30 in H2O
Load sensible heat ratio	0.81

957-4204.4.6

Bold/italic values have been manually overridden

Calculations approved by ACCA to meet all requirements of Manual J 8th Ed.



Right-Suite® Universal 2023 23.0.04 RSU28036

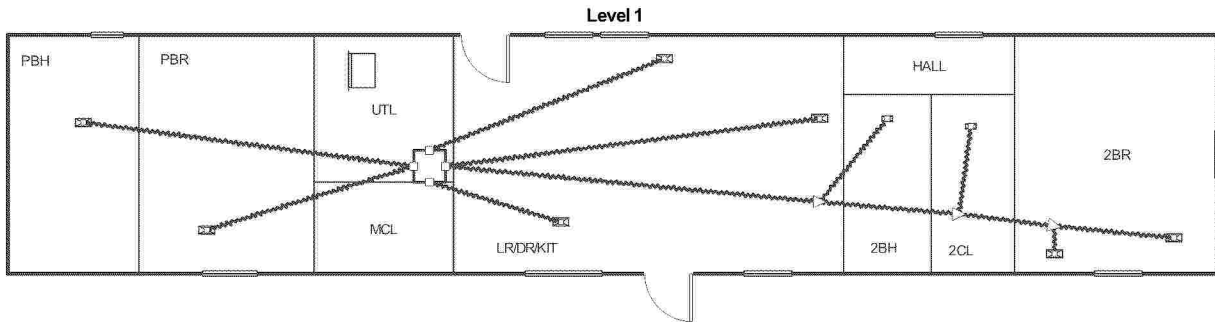
R:\WRITESOFT\MODELS\4204(OHVD).rup Calc = MJ8 Front Door faces: N

2023-Sep-13 07:23:22

Page 1



APPROVED BY
NIA INC. 9/15/2023
FEDERAL MANUFACTURED HOME
CONSTRUCTION AND SAFETY STANDARDS



957-4204.4.7

Job #: 4204_2BR(OHVD)
Performed by **CLAYTON ROCKWELL** for:
4204_2BR(OHVD)
ROCKWELL, NC

Scale: 1 : 136
Page 1
Right-Suite® Universal 2023
23.0.04 RSU28036
2023-Sep-13 07:28:41
...TESOFTMODELS\4204_2BR(OH...



Project Summary

Entire House

Job: 4204_2BR(OHVD)
 Date: Sep 12, 2023
 By: CLAYTON ROCKWELL

Project Information

For: 4204_2BR(OHVD), CLAYTON 957
 ROCKWELL, NC

Notes: DUCT COOLING CAPACITY = 26,000 BTU/HR

APPROVED BY



Design Information

Weather: Columbia Metro, SC, US

Winter Design Conditions

Outside db 27 °F
 Inside db 70 °F
 Design TD 43 °F

Summer Design Conditions

Outside db 95 °F
 Inside db 75 °F
 Design TD 20 °F
 Daily range M
 Relative humidity 50 %
 Moisture difference 34 gr/lb

Heating Summary

Structure 12859 Btuh
 Ducts 2927 Btuh
Central vent (45 cfm) **2111** Btuh
Outside air
 Humidification 0 Btuh
 Piping 0 Btuh
 Equipment load 17897 Btuh

Sensible Cooling Equipment Load Sizing

Structure 11820 Btuh
 Ducts 2642 Btuh
Central vent (45 cfm) **972** Btuh
Outside air
 Blower 0 Btuh
 Use manufacturer's data n
 Rate/swing multiplier 1.00
 Equipment sensible load 15404 Btuh

Infiltration

Method Simplified
 Construction quality Average
 Fireplaces 0

Latent Cooling Equipment Load Sizing

Structure 1804 Btuh
 Ducts 498 Btuh
Central vent (45 cfm) **1044** Btuh
Outside air
 Equipment latent load 3347 Btuh

	Heating	Cooling
Area (ft ²)	1140	1140
Volume (ft ³)	9120	9120
Air changes/hour	0.45	0.23
Equiv. AVF (cfm)	82	52

Equipment Total Load (Sen+Lat) 18751 Btuh
 Req. total capacity at 0.70 SHR 1.8 ton

Heating Equipment Summary

Make Smart Comfort
 Trade
 Model
 AHRI ref
 Efficiency 100 EFF
 Heating input 10.0 kW
 Heating output 34121 Btuh
 Temperature rise 40 °F
 Actual air flow 780 cfm
 Air flow factor 0.049 cfm/Btuh
 Static pressure 0.30 in H2O
 Space thermostat

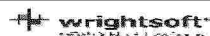
Cooling Equipment Summary

Make Smart Comfort
 Trade 15 SEER2 AC
 Cond R4A5S24*K*WAA*
 Coil FEVA0024**+NAVA43601CK
 AHRI ref 0
 Efficiency 13.0 EER2, 15.5 SEER2
 Sensible cooling 16380 Btuh
 Latent cooling 7020 Btuh
 Total cooling 23400 Btuh
 Actual air flow 780 cfm
 Air flow factor 0.054 cfm/Btuh
 Static pressure 0.30 in H2O
 Load sensible heat ratio 0.82

957-4204.4.8

Bold/italic values have been manually overridden

Calculations approved by ACCA to meet all requirements of Manual J 8th Ed.



Right-Suite® Universal 2023 23.0.04 RSJ28036

R:\WRITESOFT\MODELS\4204_2BR(OHVD).rup Calc = MJB Front Door faces: N

2023-Sep-13 07:28:31

Page 1