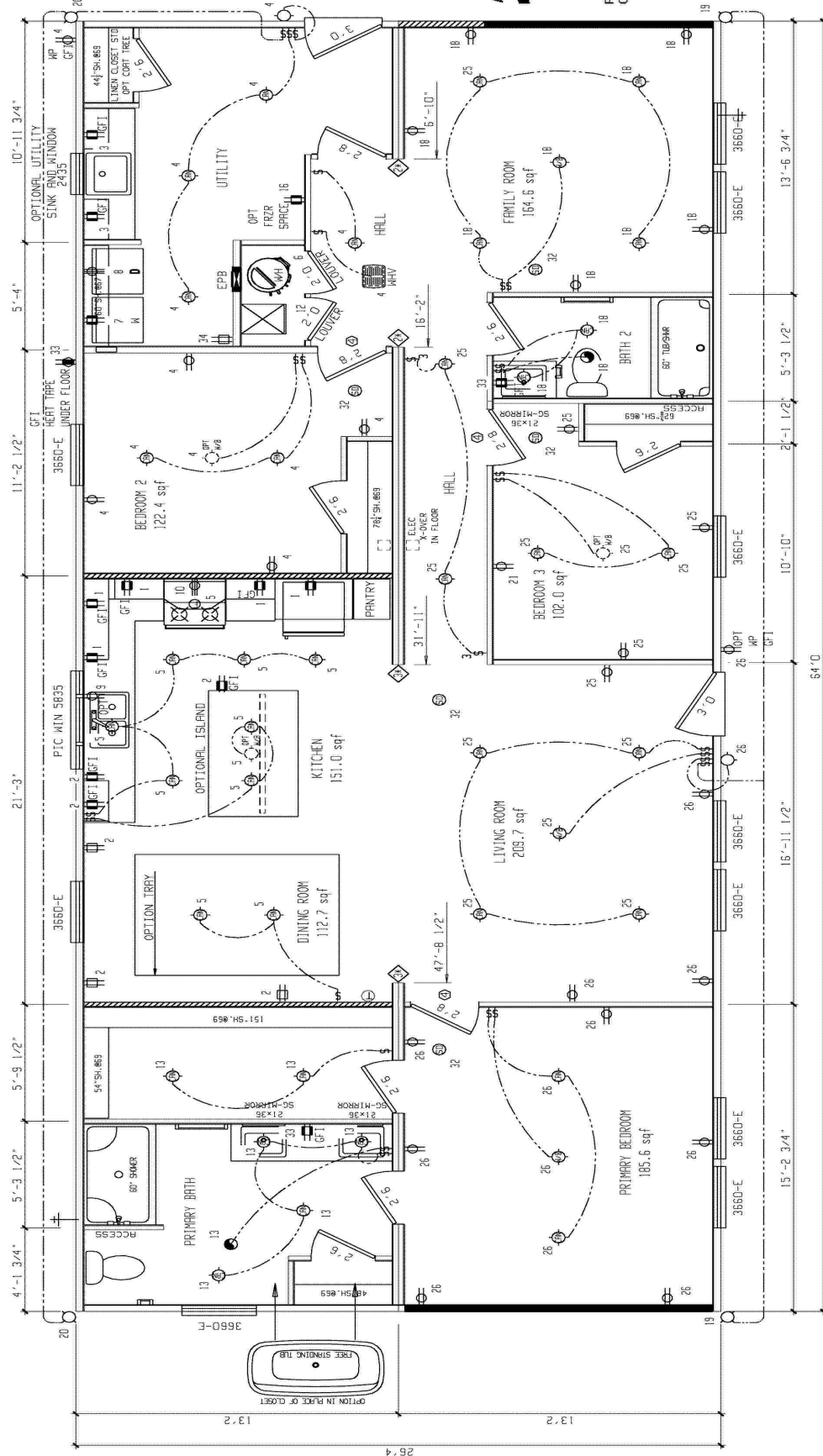


48 47 46 45 44 43 42 41 40 39 38 37 36 35 34 33 32 31 30 29 28 27 26 25 24 23 22 21 20 19 18 17 16 15 14 13 12 11 10 9 8 7 6 5 4 3 2 1 0

OPT. COAT HANG. IN PLACE OF LINEN CLOSET



APPROVED BY  
**NIA INC.**  
 FEDERAL MANUFACTURED HOME  
 CONSTRUCTION AND SAFETY STANDARDS  
 7/31/2023

957-4215.0

48 47 46 45 44 43 42 41 40 39 38 37 36 35 34 33 32 31 30 29 28 27 26 25 24 23 22 21 20 19 18 17 16 15 14 13 12 11 10 9 8 7 6 5 4 3 2 1 0

REVISIONS		GENERAL NOTES		DRAWING TITLE		RETURN AIR REQUIREMENTS	
NO.	DATE	BY	DATE	DESCRIPTION	MODEL NAME	PLANT	INDICATES REQUIRED NUMBER OF STUDS IN COLUMN
1				CEILING HEIGHT = 96'-00"	4215	957	① 20"x16" GRILL REQUIRED
2				REFER TO DRAFT PRICE MFC-2.0 FOR AREA LIGHT & VENT		28X64 3BR-2BR	② 4"x10" GRILL W/ 2 1/2" DOOR UNDERCUT
3				FLOOR FINISH SPRING = 16			③ DOOR(S) MUST BE UNDERCUT 2 1/2" MIN.
4				TOTAL WINDOW SFT = 174			④ 4"x24" OR 6"x14" GRILL REQUIRED
5							
6							
7							
8							
9							
10							
11							
12							
13							
14							
15							
16							
17							
18							
19							
20							
21							
22							
23							
24							
25							
26							
27							
28							
29							
30							
31							
32							
33							
34							
35							
36							
37							
38							
39							
40							
41							
42							
43							
44							
45							
46							
47							
48							

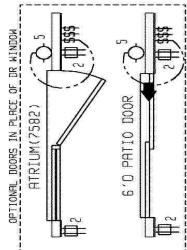
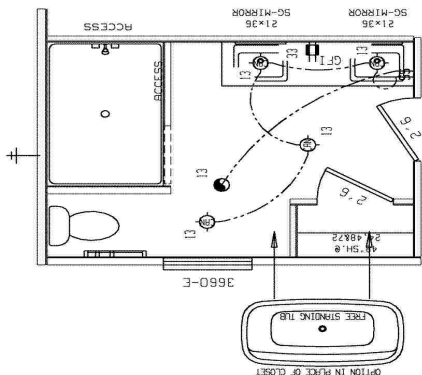
**MASTER PLAN**

CLAYTON HOME BUILDING GROUP

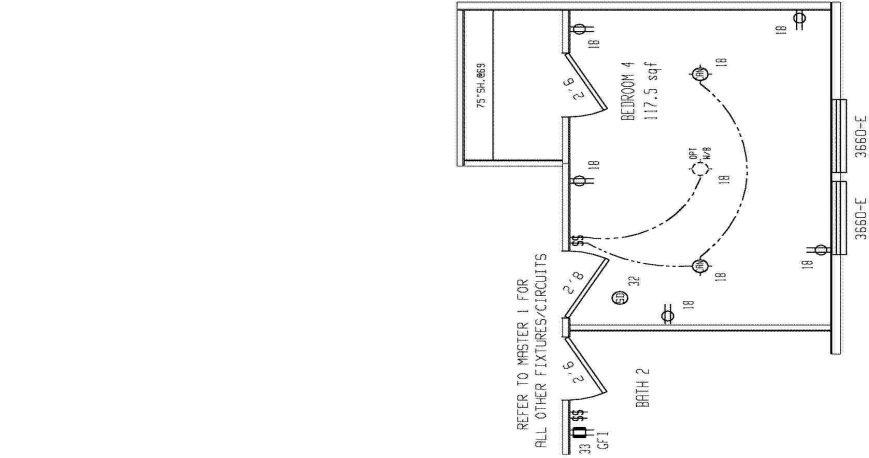
SO. FT. 1685  
 MODEL NO. 4215  
 PLANT DESCRIPTION 28X64 3BR-2BR  
 DATE PRINTED 07/28/2023  
 SHEET NO. 1-1

48 47 46 45 44 43 42 41 40 39 38 37 36 35 34 33 32 31 30 29 28 27 26 25 24 23 22 21 20 19 18 17 16 15 14 13 12 11 10 9 8 7 6 5 4 3 2 1 0

**OPTIONAL CERAMIC SHOWER BATH**



**OPTIONAL 4TH BEDROOM  
IN PLACE OF FAMILY ROOM**



APPROVED BY **NIA INC.**  
7/31/2023  
FEDERAL MANUFACTURED HOME  
CONSTRUCTION AND SAFETY STANDARDS

957-4215.01

48 47 46 45 44 43 42 41 40 39 38 37 36 35 34 33 32 31 30 29 28 27 26 25 24 23 22 21 20 19 18 17 16 15 14 13 12 11 10 9 8 7 6 5 4 3 2 1 0

REVISIONS		BY	DATE	GENERAL NOTES

BRAND <b>CLAYTON</b>	SERIES <b>BM28</b>	DRAWING TITLE <b>MASTER PLAN #2</b>	MODEL NAME <b>4215</b>	NO. FT. <b>1685</b>
DESCRIPTION <b>28X64 3BR-2BR</b>	MODEL NO. <b>4215</b>	DATE PRINTED <b>07/25/2023</b>	DATE <b>05/09/2023</b>	SHEET NO. <b>1-2</b>
DRAWN BY <b>KLK</b>	ORIGINAL DATE <b>05/09/2023</b>	DATE PRINTED <b>07/25/2023</b>	DATE <b>05/09/2023</b>	SHEET NO. <b>1-2</b>

**CMH Inc.**  
**SHEARWALL DESIGN - HUD**



**Model # 4215**

Box Width =	158 "	Double wide	Minimum Joist Spacing 16 "
Box Length =	64 ft.	99.5" 10" MIN.IBEAM	No Offset Box
No Skylights			No Clerestory
No Porches			No Origami Dormer
Joist Size =	#2 spf 2x6	Lags 9Mx3"	No Sunken Floor
			No Parapet Roof

**Version R13.20**

Wind Zone 1 Standard Roof							96 inch sidewall
(3/8" sheathing only with 16ga. @ 4/8 oc) [132 plf] Chords: 2x4 SPF #3 Top Plate & 2x4 Rail. Diaphragm Construction: Each spliced w/ 12" glue block.							
Shearwall	Dist./ Hitch	Length	PLF	# of Joists	Lags	Notes	
A	0'	112"	210	2	2/1	*	
B	64'	112"	210	2	2/1		
Wind Zone 2 Standard Roof							96 inch sidewall
(3/8" sheathing w/ceiling with 16ga. @ 4/8 oc) [232 plf] Chords: 2x4 SPF #3 Top Plate & 2x4 Rail. Each spliced w/ 12" glue block.							
Shearwall	Dist./ Hitch	Length	PLF	# of Joists	Lags	Notes	
A	0'	144"	420	2	5/4	*	
B	64'	Full	420	2	4/4		
Wind Zone 3 Standard Roof							96 inch sidewall
(3/8" sheathing w/ceiling with 16ga. @ 4/8 oc) [232 plf] Chords: 2x4 SPF #3 Top Plate & 2x4 Rail. Each spliced w/ 12" glue block.							
Shearwall	Dist./ Hitch	Length	PLF	# of Joists	Lags	Notes	
A	0'	148"	210	2	3/2	*	
B	64'	96"	210	2	2/1		
C	27.5'	Full	420	2	2/2		
D	48.75'	128"	350	2	4/1		
(3/8" sheathing only with 14ga. @ 6/6 oc) [172 plf] Chords: 2x4 SPF #3 Top Plate & 2x4 Rail. Diaphragm Construction: Each spliced w/ 12" glue block.							
Shearwall	Dist./ Hitch	Length	PLF	# of Joists	Lags	Notes	

\* Denotes that indicated shearwall is over full depth/width front steel chassis header.

Designed by KLK

OPTIONAL CERAMIC SHOWER BATH

OPTIONAL CERAMIC SHOWER BATH

OPT PULSE SHWR HEAD

SHWR

STOOL HOSE BIBB

OPTIONAL TUB

SHWR

OPTIONAL TUB

OPTIONAL UTIL SINK

MAIN CUT-OFF

MSHR

MAIN

M/A

KIT SINK

LAV

ICE MAKER

LAV

STOOL

HOSE BIBB

D/A

KIT SINK

MSHR

OPTIONAL UTIL SINK

M/A

LAV

TUB

X-OVER

LAV

LAV

SHWR

LAV

LAV

LAV

SHWR

HOSE BIBB

STOOL

OPTIONAL TUB

OPTIONAL TUB

LAV

SHWR

OPTIONAL TUB

LAV

LAV

LAV

TUB

COLD WATER SUPPLY PLUMBING

HOT WATER SUPPLY PLUMBING

APPROVED BY  
**NIA INC.**  
 7/31/2023  
 FEDERAL MANUFACTURED HOME  
 CONSTRUCTION AND SAFETY STANDARDS

PIPE LEGEND

---	1"
---	3/4"
---	1/2"

BRAND	CLAYTON
SERIES	BM28

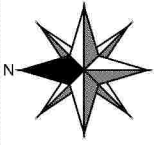
REVISIONS	DATE	BY	DESCRIPTION

GENERAL NOTES	
HOSE BIBBS PER SPECS	

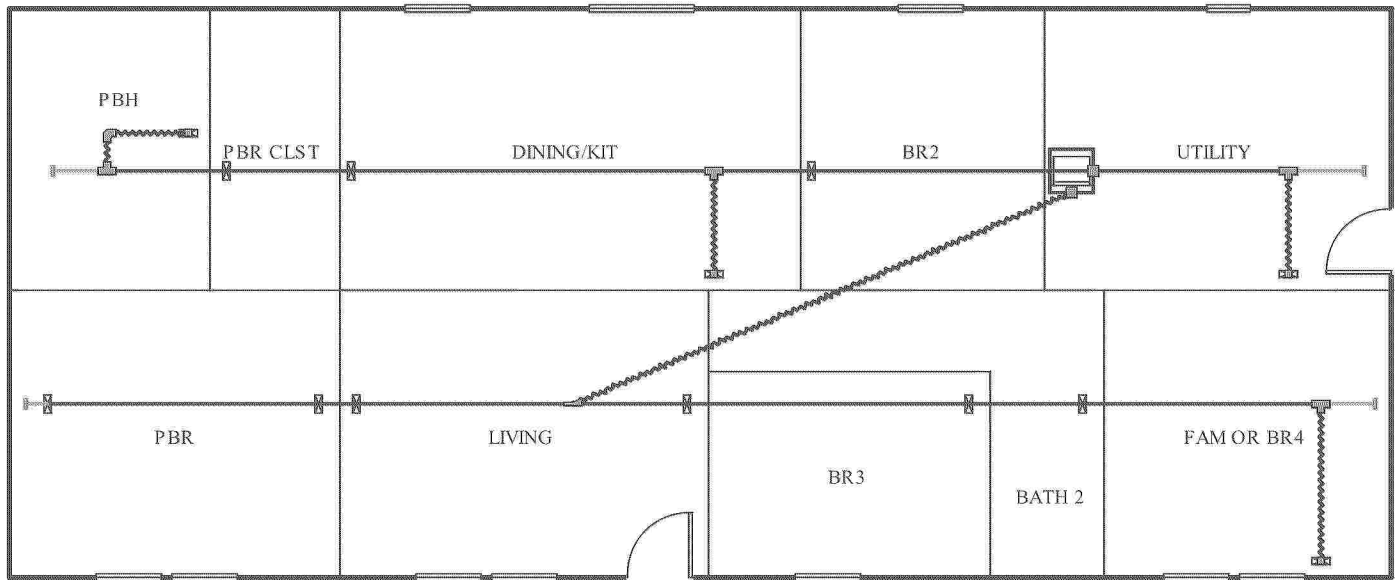
DRAWING TITLE		MODEL NAME	4215	SQ. FT.	1685
SUPPLY PLUMBING		PLANT	957	MODEL NO.	4215
		DESCRIPTION	28X64 3BR-2BA	DATE PRINTED	07/25/2023
		DRAWN BY	KLK	SHEET NO.	9-1
		ORIG. DATE	05/09/2023		

CLAYTON HOME BUILDING GROUP





Level 1



APPROVED BY  
**NIA** INC. 7/31/2023  
FEDERAL MANUFACTURED HOME  
CONSTRUCTION AND SAFETY STANDARDS

957-4215.4.1

Job #: 4215 (INLINE)  
Performed by CLAYTON ROCKWELL fo  
4215 (INLINE)  
ROCKWELL, NC

Scale: 1 : 106  
Page 1  
Right-Suite© Universal 2023  
23.0.01 RSU28035  
2023-Jul-25 14:29:36  
... WRIGHTSOFT\4215\4215\_INLINE.ru

### Project Information

For: 4215 (INLINE), CLAYTON 957  
 ROCKWELL, NC

Notes: DUCT COOLING CAPACITY = 26000 BTU/HR

APPROVED BY



### Design Information

Weather: Fort Bragg/Simmons, NC, US

#### Winter Design Conditions

Outside db 26 °F  
 Inside db 70 °F  
 Design TD 44 °F

#### Summer Design Conditions

Outside db 95 °F  
 Inside db 75 °F  
 Design TD 20 °F  
 Daily range M  
 Relative humidity 50 %  
 Moisture difference 41 gr/lb

#### Heating Summary

Structure 14844 Btuh  
 Ducts 0 Btuh  
**Central vent (90 cfm)** **4338** Btuh  
*Outside air*  
 Humidification 0 Btuh  
 Piping 0 Btuh  
 Equipment load 19181 Btuh

#### Sensible Cooling Equipment Load Sizing

Structure 13226 Btuh  
 Ducts 0 Btuh  
**Central vent (90 cfm)** **1933** Btuh  
*Outside air*  
 Blower 0 Btuh  
 Use manufacturer's data n  
 Rate/swing multiplier 1.00  
 Equipment sensible load 15114 Btuh

#### Infiltration

Method Simplified  
 Construction quality Average  
 Fireplaces 0

	Heating	Cooling
Area (ft <sup>2</sup> )	1673	1673
Volume (ft <sup>3</sup> )	13388	13388
Air changes/hour	0.38	0.20
Equip. AVF (cfm)	85	45

#### Latent Cooling Equipment Load Sizing

Structure 2022 Btuh  
 Ducts 0 Btuh  
**Central vent (90 cfm)** **2465** Btuh  
*Outside air*  
 Equipment latent load 4488 Btuh  
**Equipment Total Load (Sen+Lat)** 19601 Btuh  
 Req. total capacity at 0.70 SHR 1.8 ton

#### Heating Equipment Summary

Make Smart Comfort  
 Trade  
 Model  
 AHRI ref

Efficiency 100 EFF  
 Heating input 10.0 kW  
 Heating output 34121 Btuh  
 Temperature rise 40 °F  
 Actual air flow 780 cfm  
 Air flow factor 0.053 cfm/Btuh  
 Static pressure 0.30 in H2O  
 Space thermostat

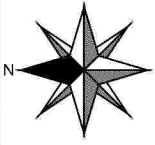
#### Cooling Equipment Summary

Make Smart Comfort  
 Trade 15 SEER2 AC  
 Cond R4A5S24\*K\*WAA\*  
 Coil FEVA0024\*\*\*+NAVA43601CK  
 AHRI ref 0  
 Efficiency 13.0 EER2, 15.5 SEER2  
 Sensible cooling 16380 Btuh  
 Latent cooling 7020 Btuh  
 Total cooling 23400 Btuh  
 Actual air flow 780 cfm  
 Air flow factor 0.059 cfm/Btuh  
 Static pressure 0.30 in H2O  
 Load sensible heat ratio 0.77

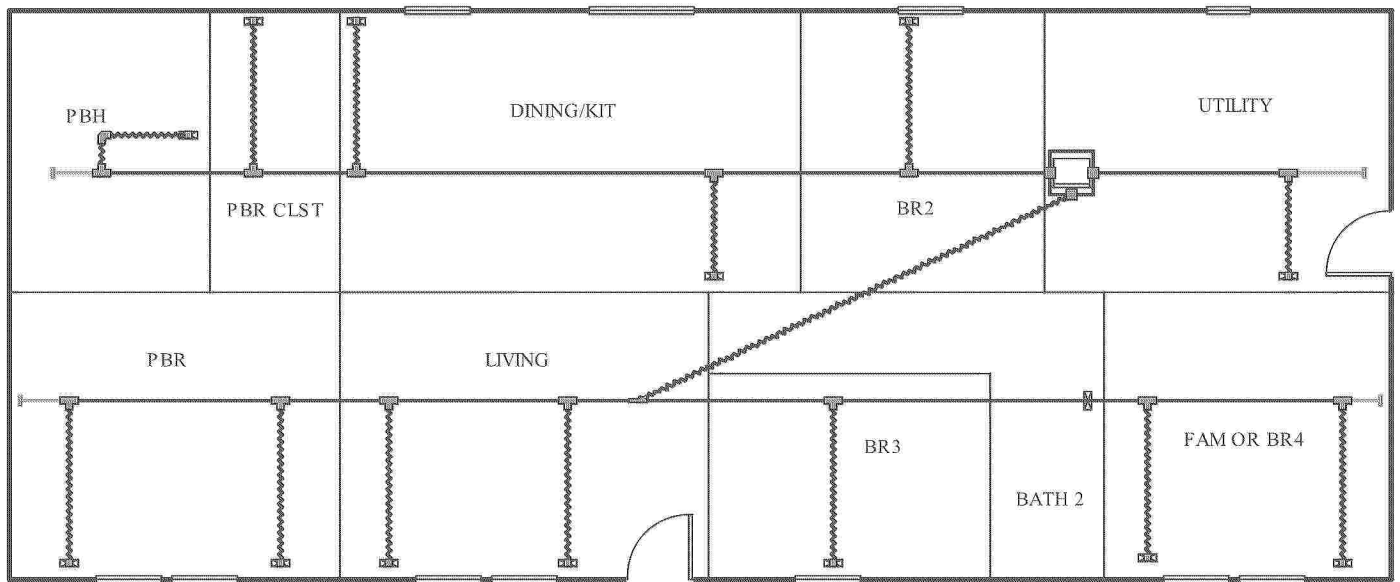
957-4215.4.2

*Bold/italic values have been manually overridden*

Calculations approved by ACCA to meet all requirements of Manual J 8th Ed.



Level 1



APPROVED BY



957-4215.4.3

Job #: 4215 (PERIMETER)  
Performed by CLAYTON ROCKWELL fo  
4215 (PERIMETER)  
ROCKWELL, NC

Scale: 1 : 106  
Page 1  
Right-Suite© Universal 2023  
23.0.01 RSU28035  
2023-Jul-25 14:31:42  
...IGHTSOFT\4215\4215\_PERIMETER.r



### Project Information

For: 4215 (PERIMETER), CLAYTON 957  
 ROCKWELL, NC

Notes: DUCT COOLING CAPACITY = 26000 BTU/HR

APPROVED BY



### Design Information

Weather: Fort Bragg/Simmons, NC, US

#### Winter Design Conditions

Outside db 26 °F  
 Inside db 70 °F  
 Design TD 44 °F

#### Summer Design Conditions

Outside db 95 °F  
 Inside db 75 °F  
 Design TD 20 °F  
 Daily range M  
 Relative humidity 50 %  
 Moisture difference 41 gr/lb

#### Heating Summary

Structure 14844 Btuh  
 Ducts 0 Btuh  
**Central vent (90 cfm)** **4338** Btuh  
*Outside air*  
 Humidification 0 Btuh  
 Piping 0 Btuh  
 Equipment load 19181 Btuh

#### Sensible Cooling Equipment Load Sizing

Structure 10906 Btuh  
 Ducts 0 Btuh  
**Central vent (90 cfm)** **1933** Btuh  
*Outside air*  
 Blower 0 Btuh  
 Use manufacturer's data n  
 Rate/swing multiplier 1.00  
 Equipment sensible load 12801 Btuh

#### Infiltration

Method Simplified  
 Construction quality Average  
 Fireplaces 0

	Heating	Cooling
Area (ft <sup>2</sup> )	1673	1673
Volume (ft <sup>3</sup> )	13388	13388
Air changes/hour	0.38	0.20
Equiv. AVF (cfm)	85	45

#### Latent Cooling Equipment Load Sizing

Structure 1222 Btuh  
 Ducts 0 Btuh  
**Central vent (90 cfm)** **2465** Btuh  
*Outside air*  
 Equipment latent load 3688 Btuh  
**Equipment Total Load (Sen+Lat)** 16488 Btuh  
 Req. total capacity at 0.70 SHR 1.5 ton

#### Heating Equipment Summary

Make Smart Comfort  
 Trade  
 Model  
 AHRI ref  
 Efficiency 100 EFF  
 Heating input 10.0 kW  
 Heating output 34121 Btuh  
 Temperature rise 40 °F  
 Actual air flow 780 cfm  
 Air flow factor 0.053 cfm/Btuh  
 Static pressure 0.30 in H2O  
 Space thermostat

#### Cooling Equipment Summary

Make Smart Comfort  
 Trade 15 SEER2 AC  
 Cond R4A5S24\*K\*WAA\*  
 Coil FEVA0024\*\*\*+NAVA43601CK  
 AHRI ref 0  
 Efficiency 13.0 EER2, 15.5 SEER2  
 Sensible cooling 16380 Btuh  
 Latent cooling 7020 Btuh  
 Total cooling 23400 Btuh  
 Actual air flow 780 cfm  
 Air flow factor 0.072 cfm/Btuh  
 Static pressure 0.30 in H2O  
 Load sensible heat ratio 0.78

957-4215.4.4

*Bold/italic values have been manually overridden*

Calculations approved by ACCA to meet all requirements of Manual J 8th Ed.