

PIPE LEGEND

1"
3/4"
1/2"

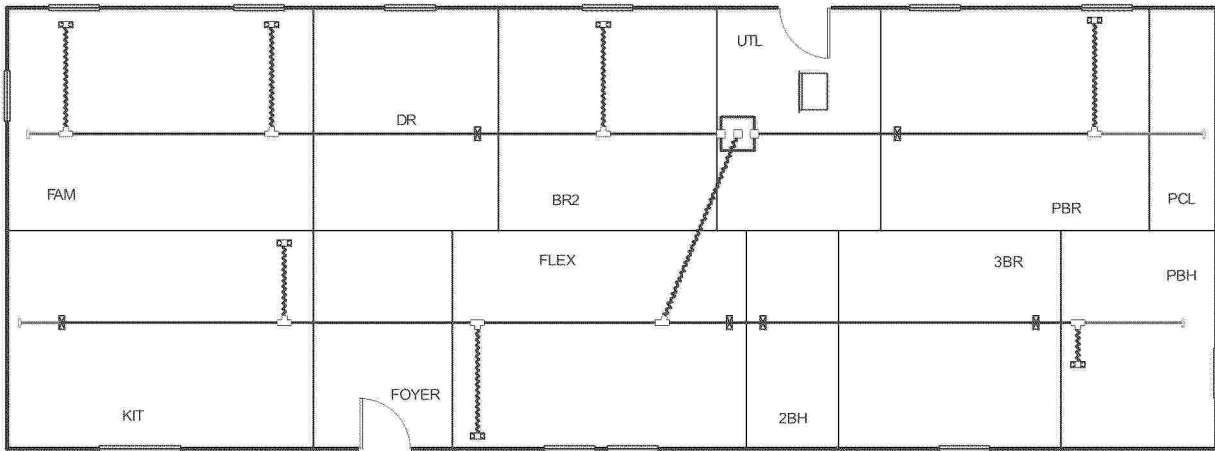
APPROVED BY
MA INC.
 FEDERAL MANUFACTURED HOME
 CONSTRUCTION AND SAFETY STANDARDS
 6/26/2023

957-4220.1

BRAND	CLAYTON	SERIES	BM28	MODEL NAME	4220	SQ. FT.	1896
CLAYTON HOME BUILDING GROUP				PLANT	957	DESCRIPTION	20X72 3BR-2BR
				DATE PRINTED	05/09/2023	DATE PRINTED	06/22/2023
				DRWN BY	GDB	SHEET NO.	9-1
				WORKING TITLE			
				SUPPLY PLUMBING			
				GENERAL NOTES			
				HOSE BIBBS PER SPCS			
				REVISIONS			
				BY			
				DATE			



Level 1



APPROVED BY
NIA 6/26/2023
INC.
FEDERAL MANUFACTURED HOME
CONSTRUCTION AND SAFETY STANDARDS

957-4220.4.1

<p>Job #: 4220(I) Performed by CLAYTON ROCKWELL for: 4220(I) ROCKWELL, NC</p>		<p>Scale: 1 : 129 Page 1 Right-Suite@ Universal 2023 23.0.01 RSU28036 2023-Jun-22 08:23:58 ...layton Homes\Desktop\4220(I).rup</p>
-------------------------------------------------------------------------------------------	--	--------------------------------------------------------------------------------------------------------------------------------------------------------



Project Summary

Entire House



Job: 4220(I)
 Date: June 22, 2023
 By: CLAYTON ROCKWELL

Project Information

For: 4220(I), CLAYTON 957
 ROCKWELL, NC

Notes: DUCT COOLING CAPACITY = 31,767 BTU/HR

Design Information

Weather: Fort Bragg/Simmons, NC, US

Winter Design Conditions

Outside db 26 °F
 Inside db 70 °F
 Design TD 44 °F

Summer Design Conditions

Outside db 95 °F
 Inside db 75 °F
 Design TD 20 °F
 Daily range M
 Relative humidity 50 %
 Moisture difference 41 gr/lb

Heating Summary

Structure 18460 Btuh
 Ducts 0 Btuh
Central vent (90 cfm) **4338** Btuh
Outside air
 Humidification 0 Btuh
 Piping 0 Btuh
 Equipment load 22797 Btuh

Sensible Cooling Equipment Load Sizing

Structure 16135 Btuh
 Ducts 0 Btuh
Central vent (90 cfm) **1933** Btuh
Outside air
 Blower 0 Btuh
 Use manufacturer's data n
 Rate/swing multiplier 1.00
 Equipment sensible load 18014 Btuh

Infiltration

Method Simplified
 Construction quality Average
 Fireplaces 0

Latent Cooling Equipment Load Sizing

Structure 2181 Btuh
 Ducts 0 Btuh
Central vent (90 cfm) **2465** Btuh
Outside air
 Equipment latent load 4646 Btuh

	Heating	Cooling
Area (ft ²)	1890	1890
Volume (ft ³)	15120	15120
Air changes/hour	0.38	0.20
Equiv. AVF (cfm)	96	50

Equipment Total Load (Sen+Lat) 22660 Btuh
 Req. total capacity at 0.70 SHR 2.1 ton

Heating Equipment Summary

Make Smart Comfort
 Trade
 Model
 AHRI ref
 Efficiency 100 EFF
 Heating input 10.0 kW
 Heating output 34121 Btuh
 Temperature rise 33 °F
 Actual air flow 953 cfm
 Air flow factor 0.052 cfm/Btuh
 Static pressure 0.30 in H2O
 Space thermostat

Cooling Equipment Summary

Make Smart Comfort
 Trade PERFORMANCE 14 SEER2 AC
 Cond R4A4S30*K*NAA*
 Coil FEVA0036**+NAVA43601CK
 AHRI ref 0
 Efficiency 12.5 EER2, 15 SEER2
 Sensible cooling 20020 Btuh
 Latent cooling 8580 Btuh
 Total cooling 28600 Btuh
 Actual air flow 953 cfm
 Air flow factor 0.059 cfm/Btuh
 Static pressure 0.30 in H2O
 Load sensible heat ratio 0.80

957-4220.4.2

Bold/italic values have been manually overridden

Calculations approved by ACCA to meet all requirements of Manual J 8th Ed.



Right-Suite® Universal 2023 23.0.01 RSJ28036

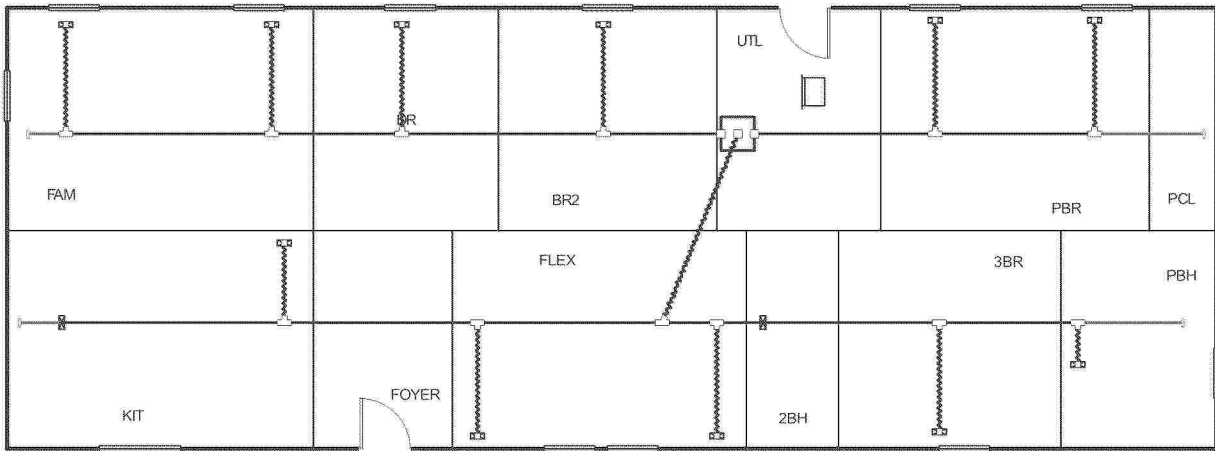
...ug\OneDrive - Clayton Homes\Desktop\4220(I).rup Calc = MJ8 Front Doorfaces: N

2023-Jun-22 08:23:38

Page 1



Level 1



APPROVED BY
NIA INC. 6/26/2023
FEDERAL MANUFACTURED HOME
CONSTRUCTION AND SAFETY STANDARDS

957-4220.4.3

Job #: 4220(P)
Performed by CLAYTON ROCKWELL for:
4220(P)
ROCKWELL, NC

Scale: 1 : 129
Page 1
Right-Suite® Universal 2023
23.0.01 RSU28036
2023-Jun-22 08:36:49
...layton Homes\Desktop\4220(P).rup



Project Summary

Entire House

Job: 4220(P)
 Date: June 22, 2023
 By: CLAYTON ROCKWELL

Project Information

For: 4220(P), CLAYTON 957
 ROCKWELL, NC

Notes: DUCT COOLING CAPACITY = 31,767 BTU/HR



Design Information

Weather: Fort Bragg/Simmons, NC, US

Winter Design Conditions

Outside db 26 °F
 Inside db 70 °F
 Design TD 44 °F

Summer Design Conditions

Outside db 95 °F
 Inside db 75 °F
 Design TD 20 °F
 Daily range M
 Relative humidity 50 %
 Moisture difference 41 gr/lb

Heating Summary

Structure 18460 Btuh
 Ducts 0 Btuh
Central vent (90 cfm) **4338** Btuh
Outside air
 Humidification 0 Btuh
 Piping 0 Btuh
 Equipment load 22797 Btuh

Sensible Cooling Equipment Load Sizing

Structure 16135 Btuh
 Ducts 0 Btuh
Central vent (90 cfm) **1933** Btuh
Outside air
 Blower 0 Btuh
 Use manufacturer's data n
 Rate/swing multiplier 1.00
 Equipment sensible load 18014 Btuh

Infiltration

Method Simplified
 Construction quality Average
 Fireplaces 0

Latent Cooling Equipment Load Sizing

Structure 2181 Btuh
 Ducts 0 Btuh
Central vent (90 cfm) **2465** Btuh
Outside air
 Equipment latent load 4646 Btuh

	Heating	Cooling
Area (ft ²)	1890	1890
Volume (ft ³)	15120	15120
Air changes/hour	0.38	0.20
Equiv. AVF (cfm)	96	50

Equipment Total Load (Sen+Lat) 22660 Btuh
 Req. total capacity at 0.70 SHR 2.1 ton

Heating Equipment Summary

Make Smart Comfort
 Trade
 Model
 AHRI ref

Efficiency 100 EFF
 Heating input 10.0 kW
 Heating output 34121 Btuh
 Temperature rise 33 °F
 Actual air flow 953 cfm
 Air flow factor 0.052 cfm/Btuh
 Static pressure 0.30 in H2O
 Space thermostat

Cooling Equipment Summary

Make Smart Comfort
 Trade PERFORMANCE 14 SEER2 AC
 Cond R4A4S30*K*NAA*
 Coil FEVA0036**+NAVA43601CK
 AHRI ref 0
 Efficiency 12.5 EER2, 15 SEER2

Sensible cooling 20020 Btuh
 Latent cooling 8580 Btuh
 Total cooling 28600 Btuh
 Actual air flow 953 cfm
 Air flow factor 0.059 cfm/Btuh
 Static pressure 0.30 in H2O
 Load sensible heat ratio 0.80

957-4220.4.4

Bold/italic values have been manually overridden

Calculations approved by ACCA to meet all requirements of Manual J 8th Ed.

